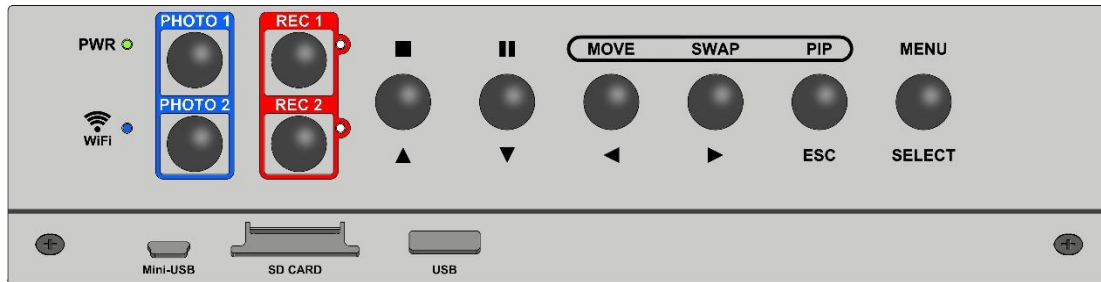


Introduction

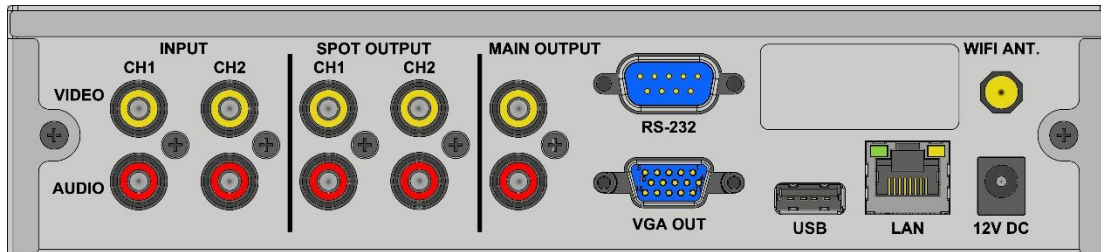
Thank you for purchasing OTI-960-2A DVR which is specifically designed for underwater video recording.

Please see features and set-up procedures in this Quick Guide.











Front Panel



Rear Panel



Functions of Button

	<p><u>MENU</u>: enter into MENU. <u>In MENU</u>: use to select (deselect) / enter.</p>		<p><u>PIP</u>: to toggle Picture in Picture On/Off <u>In MENU</u>: ESC</p>
	<p><u>When PIP Enabled</u>: use to swap CH1 & CH2 inset <u>When in Single CH mode</u>: use to swap CH1 & CH2. <u>MENU</u>: Right <u>Backup Menu</u>: to deselect all files. <u>Play video</u>: FFD x2, x4, x8, x16</p>		<p><u>When PIP enabled</u>: Use to move the small screen to other positions. <u>MENU</u>: Left <u>Backup Menu</u>: to select all files. <u>Play video</u>: RWD x2, x4, x8, x16</p>
	<p><u>Playback List</u>: Pause/Play <u>MENU</u>: Down</p>		<p><u>REC</u>: to stop recording. <u>MENU</u>: Up</p>
	<p><u>Live View Mode</u>: to record CH 1. <u>System Setting</u>: to save the input letters of TITLE. <u>Backup Menu</u>: to backup the selected files.</p>		<p><u>Live View Mode</u>: to record CH 2. <u>System Setting</u>: to backspace the input letters of TITLE. <u>Backup Menu</u>: to delete the selected files.</p>
	<p><u>Live View Mode</u>: Press to take photo of CH1. <u>System Options</u>: Use to change to lowercase letters</p>		<p><u>Live View Mode</u>: Press to take photo of CH 2.</p>

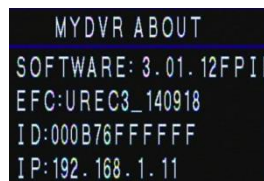
Main MENU

1. The settings only can be changed in LIVE VIEW MODE mode by pressing the MENU button on the front panel.
2. Press the ▲ or ▼ button to access the settings.



SYSTEM SETTING

- **DATE FORMAT:** 3 options – YYMMDD, MMDDYY, & DDMMYY.
- **DATE:** Press the ▲ or ▼ button to set the date.
- **TIME:** Press the ▲ or ▼ button to set the time.
- **CH1 & CH2 TITLE:** Maximum 8 Characters
- **OVERLAY MODE:**
 - “DVR MODE” uses “Display Setting” settings onboard DVR
 - “RS-232” – Proprietary protocol used only with specialized Outland equipment
- **OVERLAY ON:** 4 options – BOTH, CH1, CH2 & NONE.
- **TV SYSTEM:** To select “NTSC” or “PAL”.
- **LOGO OVERLAY:**
 - ◆ Make logo by file name “logo. jpg” in SD CARD, and USB1 (front USB A Type port).
 - ◆ The DVR only supports logo in jpg format & sized less than 224x55 pixels (12800).
 - ◆ Select “MAKE LOGO” to make one.
 - ◆ File name must be logo.jpg and in the root directory. Otherwise, the DVR cannot detect it.
- **DISPLAY SETTING**
9 positions: NONE, BOTTOM-R, BOTTOM, BOTTOM-L, RIGHT, LEFT, UPPER-R, UPPER & UPPER-L.
(to use GPS mode, you must have USB GPS dongle installed, not included)
- **MYDVR ABOUT**
 - ◆ Displays IP address for remote live view.
 - ◆ Displays the software version.

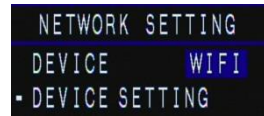
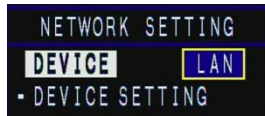


NETWORK SETTING

User can have remote live view by VLC Media Player and download files when connecting NETWORK.

LAN / WI-FI (AD-HOC, AUTO)

- Select the DEVICE (LAN or WIFI)
- Configure the setting.
- Reboot the DVR.



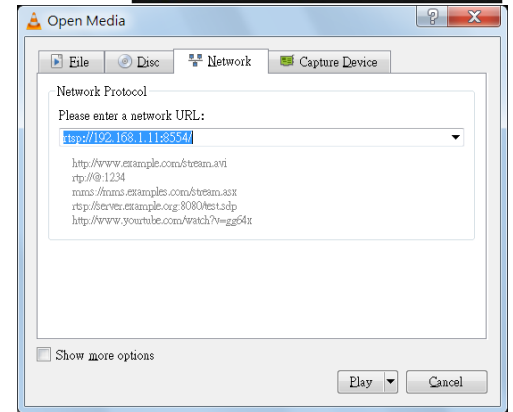
NETWORKING

- After reboot, the DVR will follow the setting to connect LAN or Wi-Fi and show **L** for LAN or **W** for Wi-Fi on the screen.
- For Wi-Fi, the colors of icons (red, yellow & green) indicate the strength of Wi-Fi signal.
- ↑** is the icon on DVR's screen informing remote view the image of DVR.

In VLC: Media → Open Network Stream → Network Protocol input

rtsp://192.168.x.xx:8554/ (CH1) or rtsp://192.168.x.xx:8550/ (CH2)

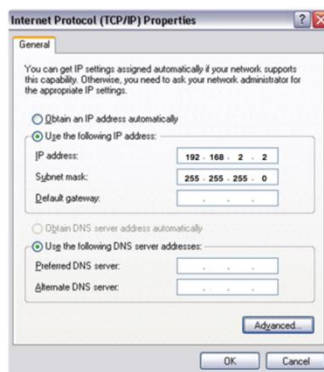
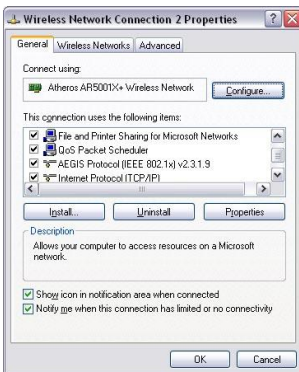
Check MYDVR ABOUT of the IP.



[AD-HOC]



i. To set the ESSID in the DVR and get the IP address (the default IP of AD-HOC is 192.168.2.88), and then reboot the DVR.

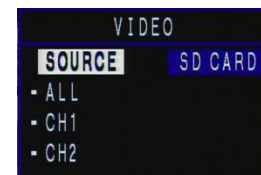
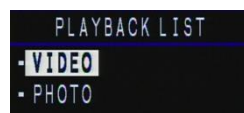


AD-HOC setting in laptop **NOTE: Before you set LAN for NETWORK, make sure it is "AUTO" mode in Wi-Fi.**

- In wireless net setting → Internet Protocol (TCP/IP)
- Select "Use the following IP address" → IP address: 192.168.2.x (2~245 but 88) & Subnet mask: 255.255.255.0 → Press "OK".
- In AD-HOC mode, you also have live view via VLC.

PLAYBACK LIST

1. You are able to watch VIDEO or PHOTO of both channels.
2. Select SOURCE, then select ALL for both channels to be listed at once OR select CH1 or CH2 to see only that channel at once.
3. In VIDEO category, press “SELECT” to play the video.
4. In PHOTO category, Press “SELECT” to watch the photo.



RECORD SETTING

- There are two options in the RECORD SETTING – to save files to HDD (default) or SD CARD.
- When power is on and there is either one in the DVR, it will be detected and set as storage device.
- When power is on and both SD CARD and HDD are in DVR, you can choose the storage device.
- When neither SD CARD nor HDD is detected, it will show “NO STORAGE DEVICE”.



BACKUP MENU

(3 methods)

1: **SOURCE:** HDD or SD CARD.

DEST.: HDD, USB1 or SD CARD.



2: **【 FTP site download files 】**

1. When connecting NETWORK, user can download files remotely. Select “ON” for this function.
2. Find out the IP address at MYDVR ABOUT in SYSTEM SETTING.
3. Link the ftp ip → ftp://192.168.x.xx in browser

3: **OFFLOAD VIDEO VIA USB**

Connect Mini-B USB cable (not included) to USB port on front of DVR and to computer for offloading video to computer.

DRIVE MANAGER

- Displays storage information and format storage devices, SD CARD and HDD.
- When there is no storage device, it will show “NO STORAGE DEVICE” on the screen.
- When you select to format the storage device, the DVR will confirm this matter again before formatting.



